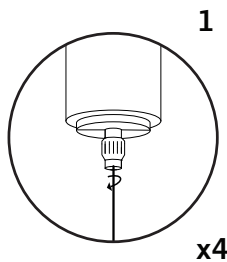
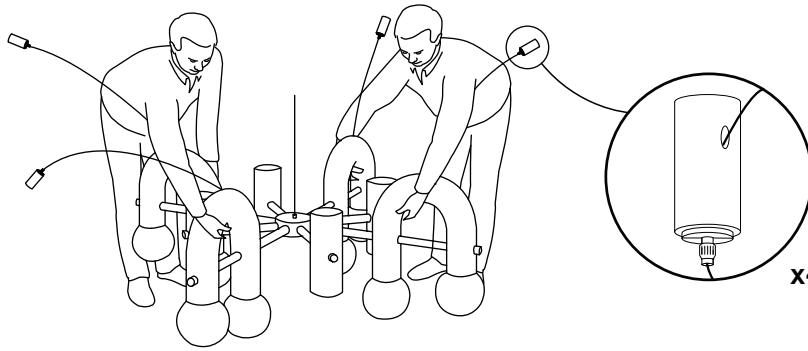
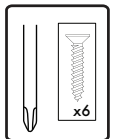
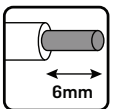
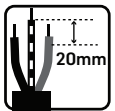
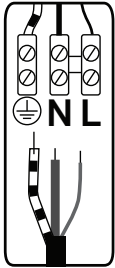


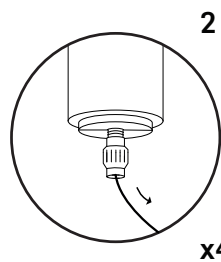
PYPPE SUSPENSION LAMP

Installation instructions

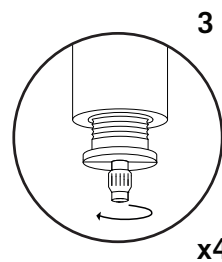
If the flexible external cable or the cord of this lamp is damaged, it must be replaced by the manufacturer, his service of maintenance or any person of equivalent qualification to avoid any risk.



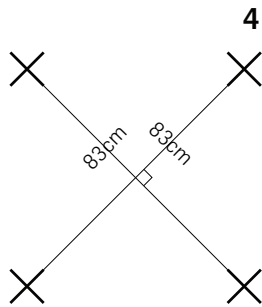
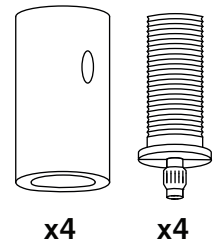
rotate to unlock



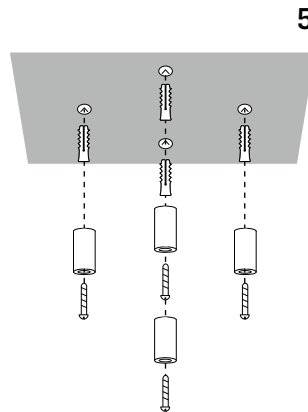
pull the stainless steel cable completely out



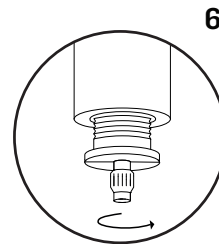
unscrew the metallic fitting of



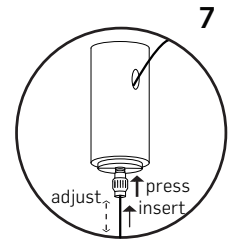
drilling for ceiling anchoring



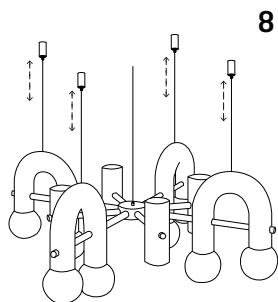
screw the anchoring pieces to the ceiling



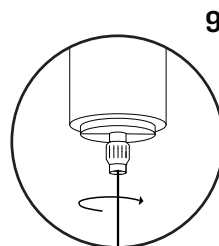
screw the metallic fitting back



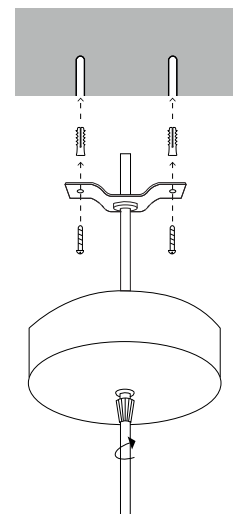
insert the stainless steel cable back in and adjust length



level the lamp by adjusting the 4 steel cables length



rotate to lock



ceiling rosette

for indoor use only