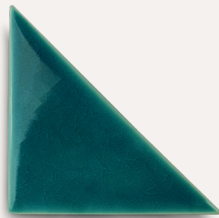
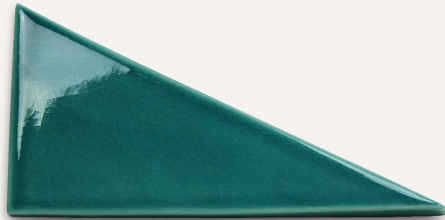


tejo

*Tejo is a registered design



Tejo small



Tejo big

technical information

Handmade tiles
 w 12,5 cm x h 12,5 cm x d 2 cm
 w 5" x h 5" x d 0,8"
 128 units per sqm 64 flat plus
 64 tridimensional
 weight:
 200 gr
 0,44 lb
 m² — 25,6 kg
 sqm — 56,3 lb

Handmade tiles
 w 25 cm x h 12,5 cm x d 2 cm
 w 10" x h 5" x d 0,8"
 64 units per sqm
 weight:
 290 gr
 0,64 lb
 m² — 18,6 kg
 sqm — 40,9 lb

* all the sizes are approximate

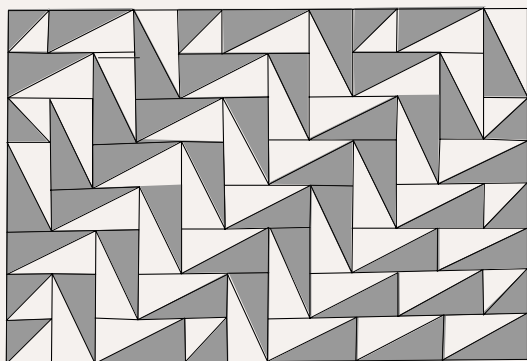
* all the sizes are approximate

colours

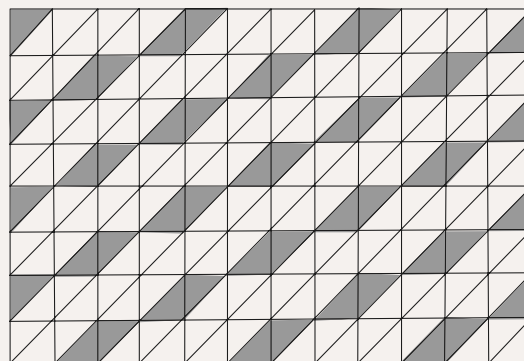


placement suggestions

mix tejo big
and tejo small

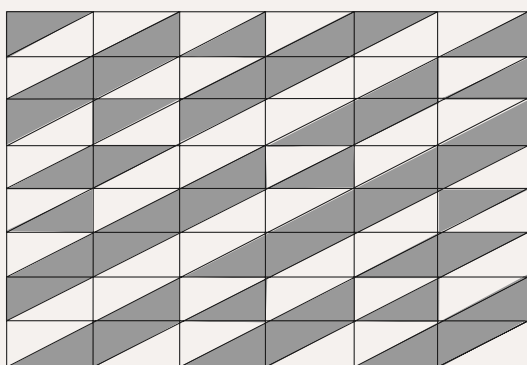


1
only
tejo small

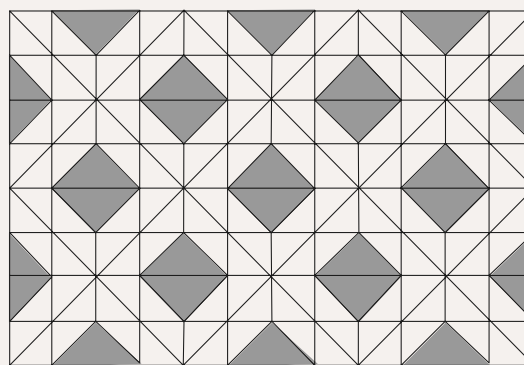


2

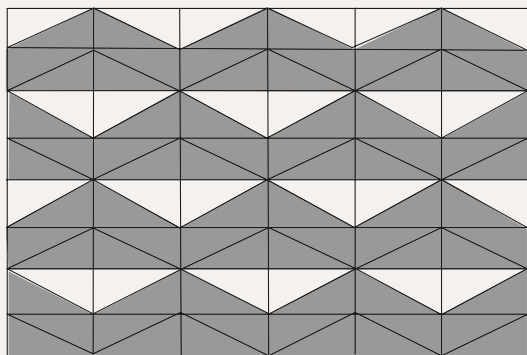
only
tejo big



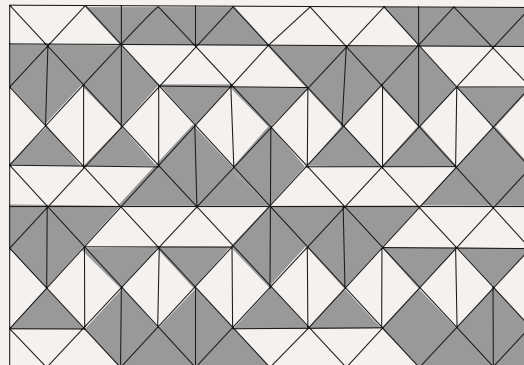
3



4



5



6